

## EclerNet Manager

UCPs



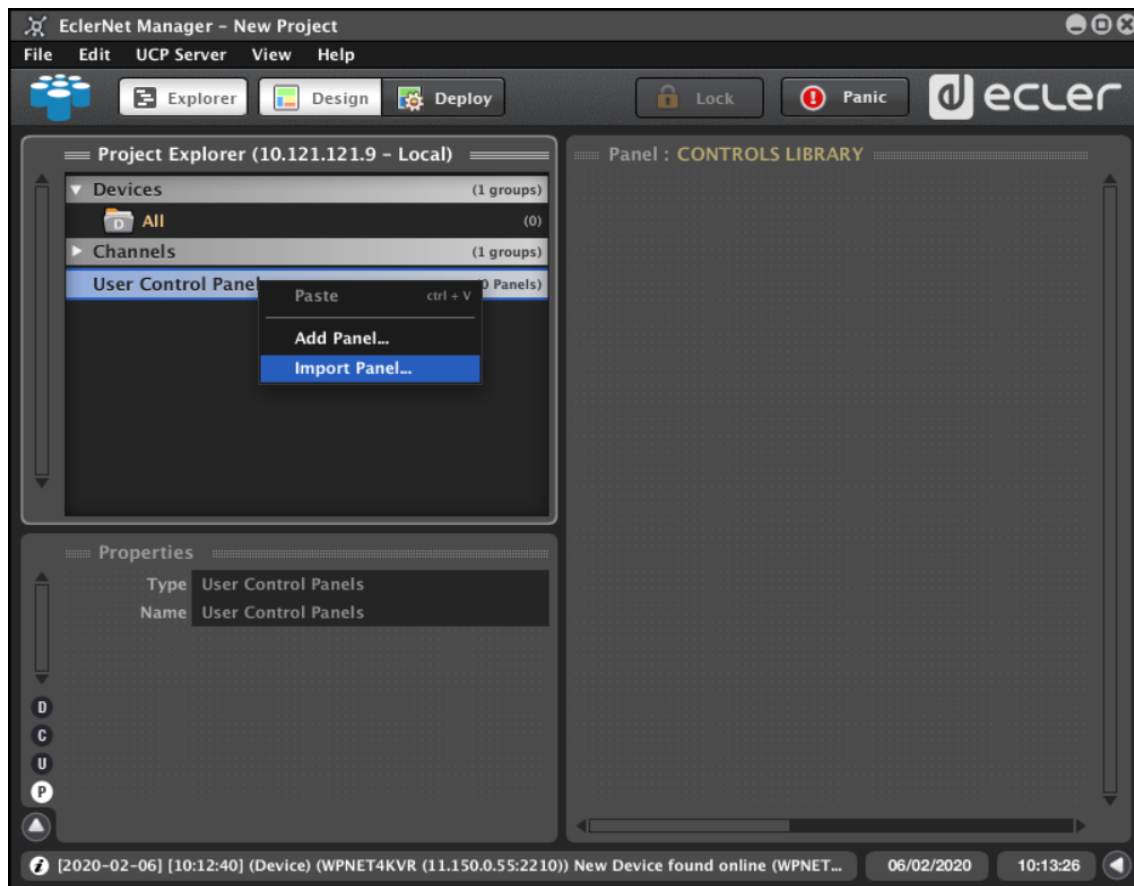
## How to use the Basic Panels

## INDEX

1. How to use the Basic panels? .....	3
2. Copying one control.....	6
3. Copying several objects (i.e. fader) .....	8
4. Basic Panels 800x480 .....	12
5. Basic Panels 1280x800 .....	14

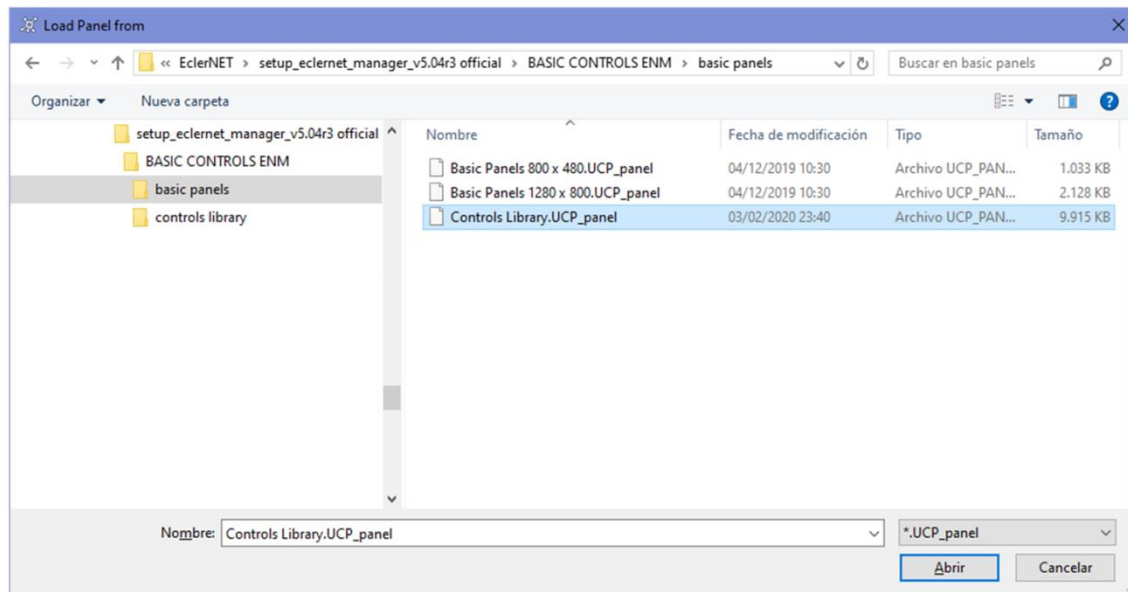
## 1. How to use the Basic panels?

Right-click on the User Control Panel title bar and select “Import Panel...”

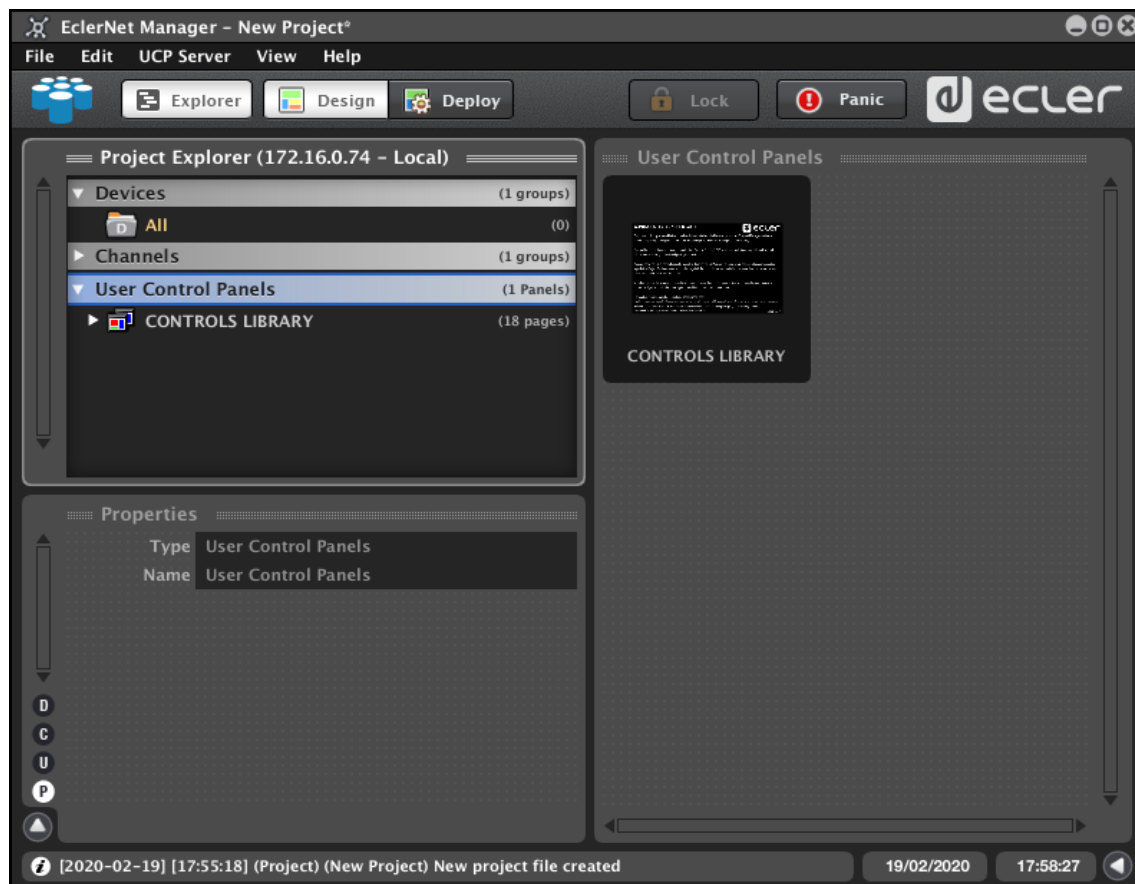


In the EclerNet Manager Software & Firmware package you have downloaded from [www.ecler.com](http://www.ecler.com) you will find some Panel templates at different resolution (800 x 480 and 1280 x 800, see Basic ones at the end of this doc) and the Controls Library.UCP\_panel.

Chose the Controls Library.UCP\_panel (note the ZIP file should be previously unzipped in your PC and you will find the panel files in “BASIC CONTROLS ENM/Basic Panels” folder).

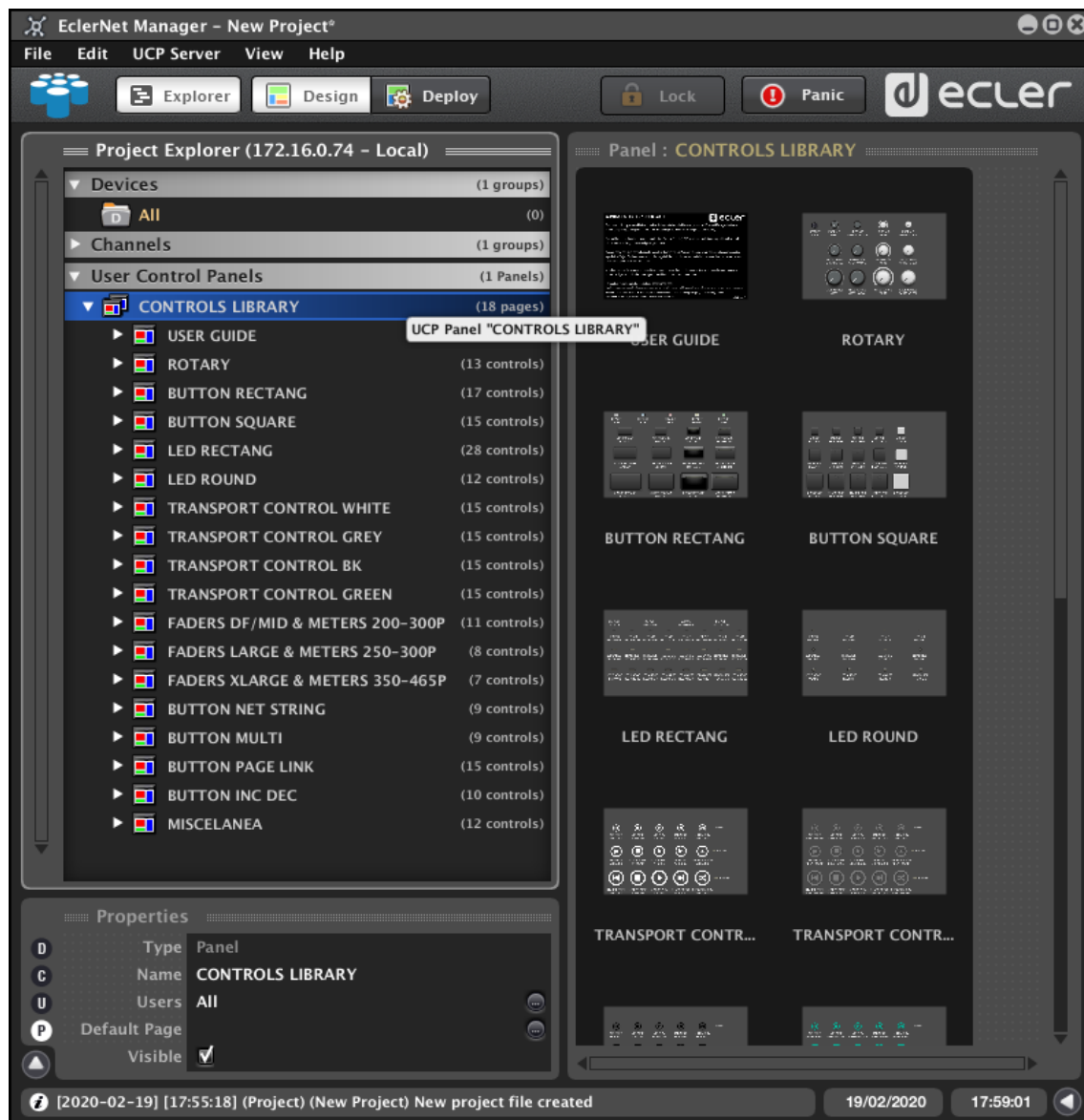


A UCP Panel will be added in EclerNet Manager Project Explorer window called “CONTROLS LIBRARY”



This UCP Panel contains almost all the control objects available in the “BASIC CONTROLS ENM/controls” library folder (also downloaded with the EclerNet Manager Software & Firmware Package).

Open the CONTROLS LIBRARY UCP:



You will find several pages with different controls. If you select one of the pages you will see several designs.

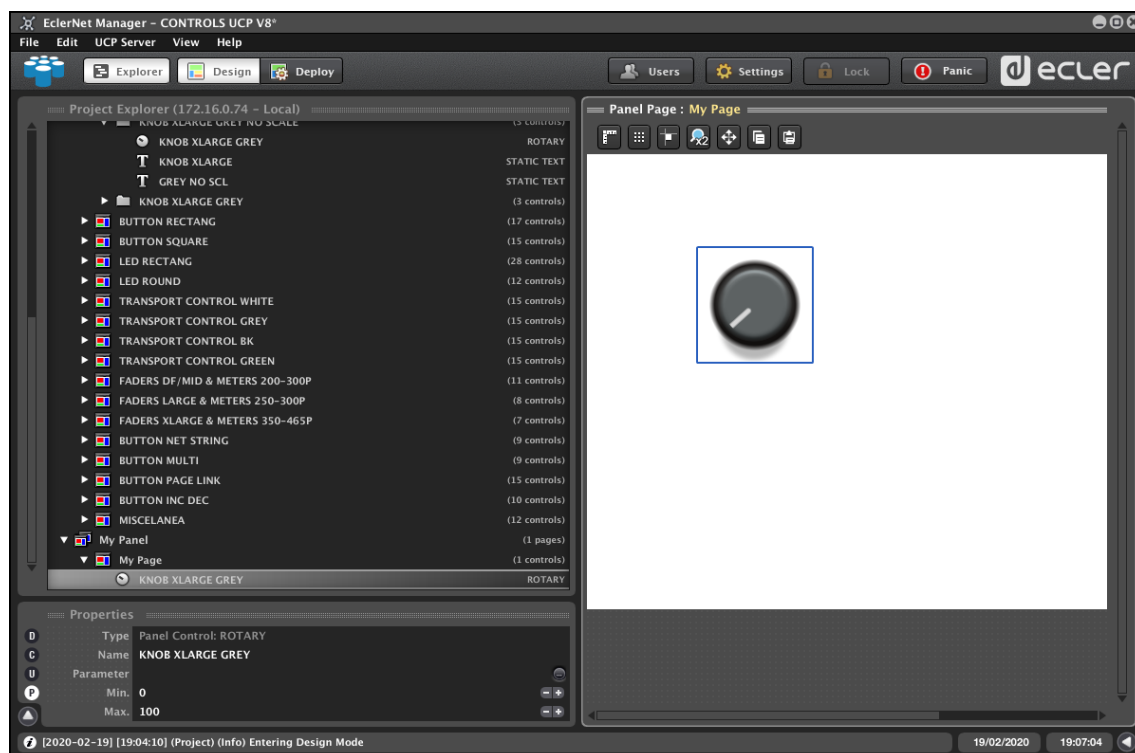
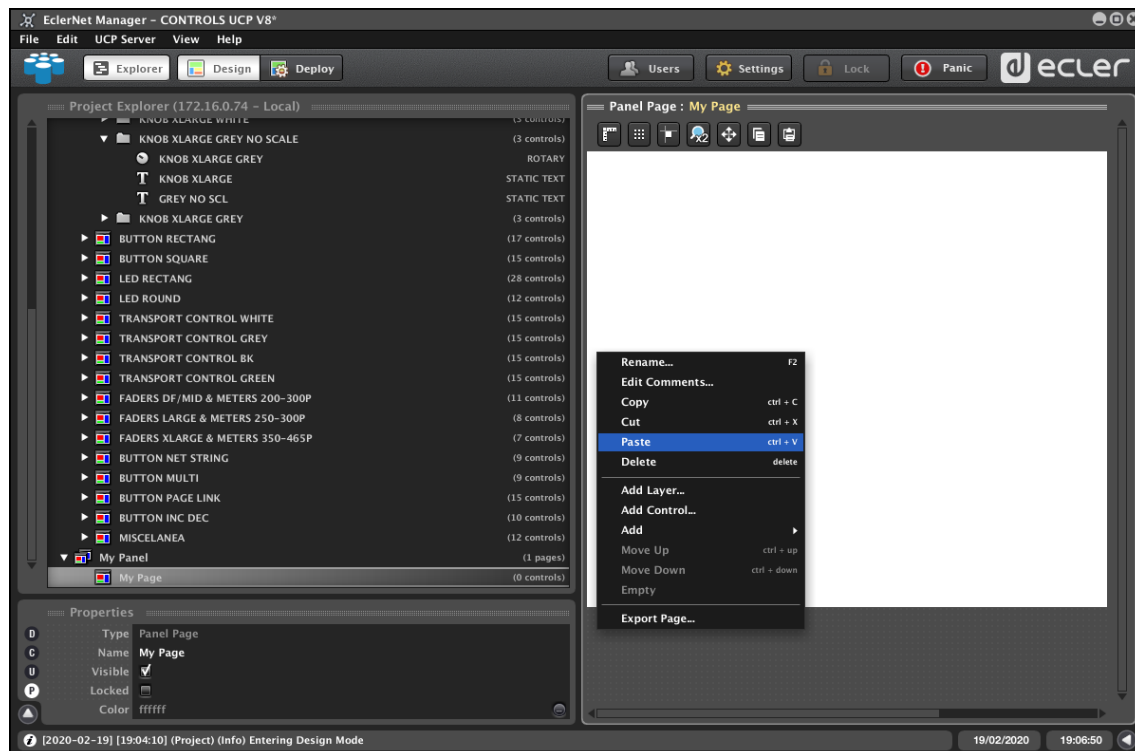


## 2. Copying one control

To copy the control you like an add it to your UCP, you just have to select it in the page, right-click on it and copy



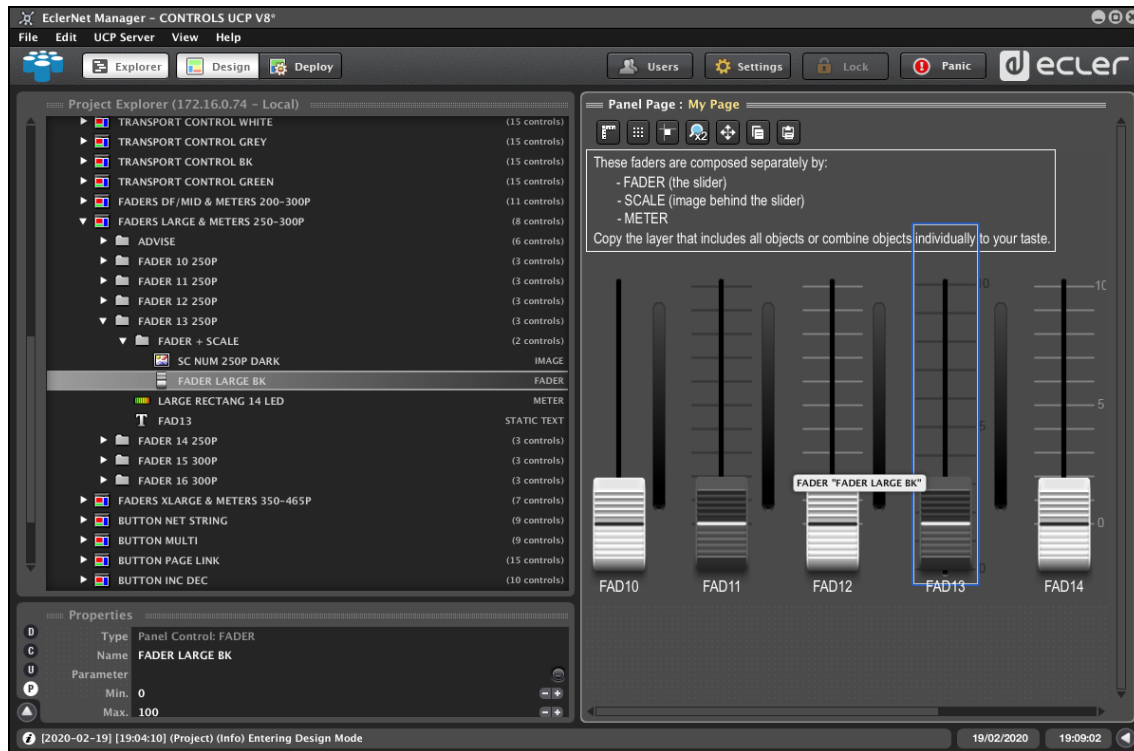
Then select the UCP where you want to paste it, right-click and paste it.



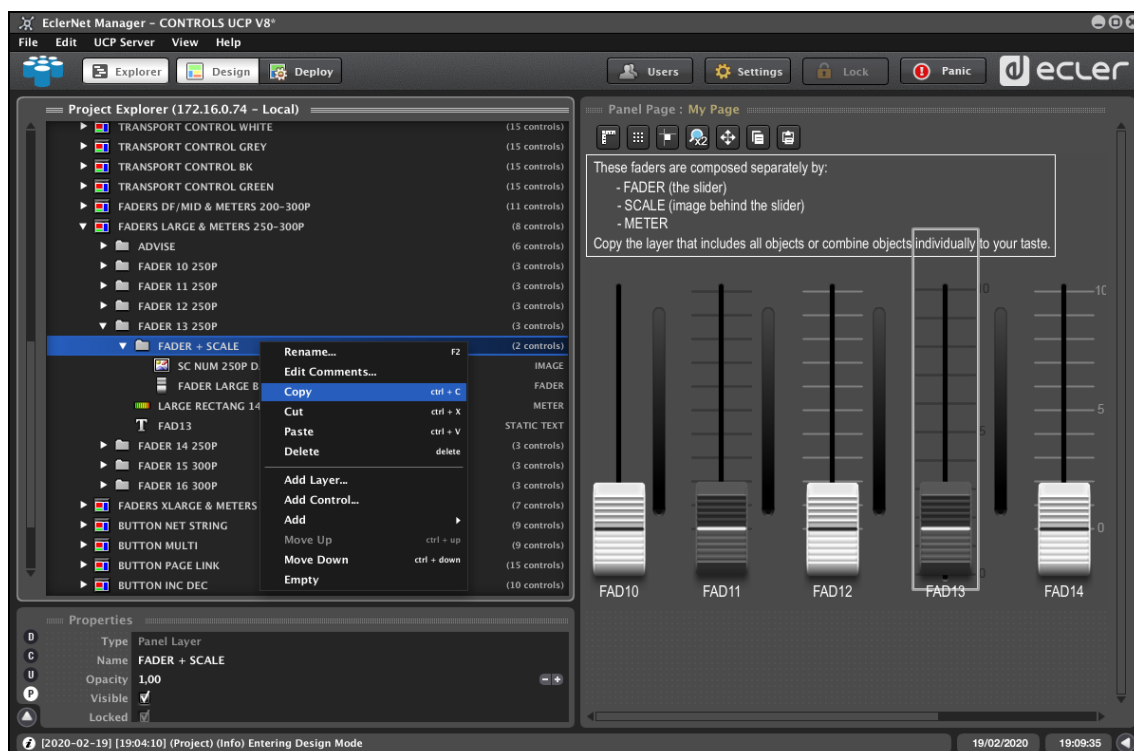
### 3. Copying several objects (i.e. fader)

A fader is composed by the slider and the scale. If you want to copy both elements you should select the layer. See the example:

You should first select the fader you want to copy. Once is selected it will be very easy to localize the layer you will have to copy on the Project Explorer Window:

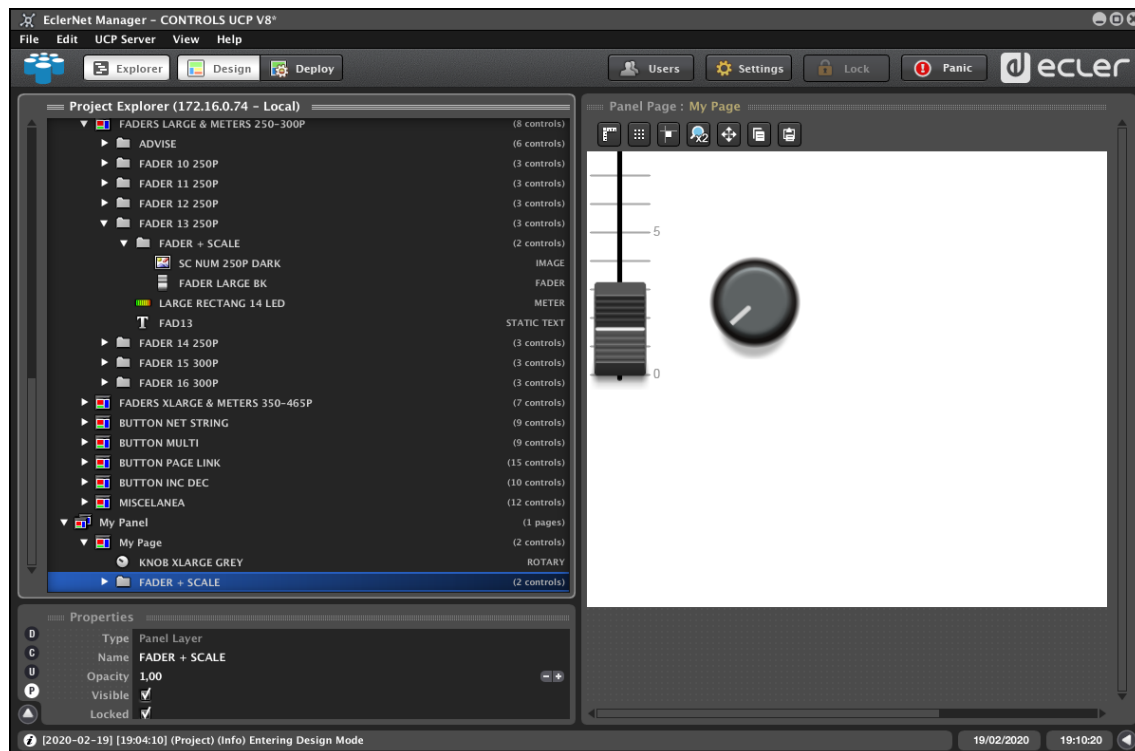


Then select “FADER + SCALE” layer and copy it:

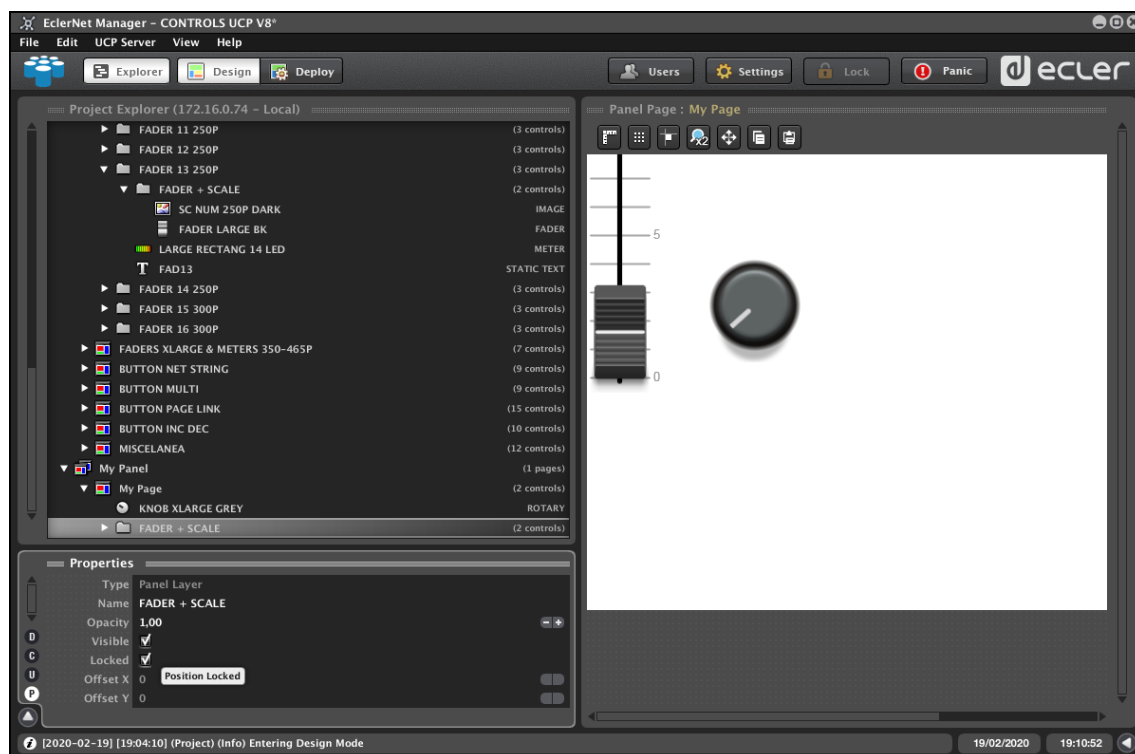


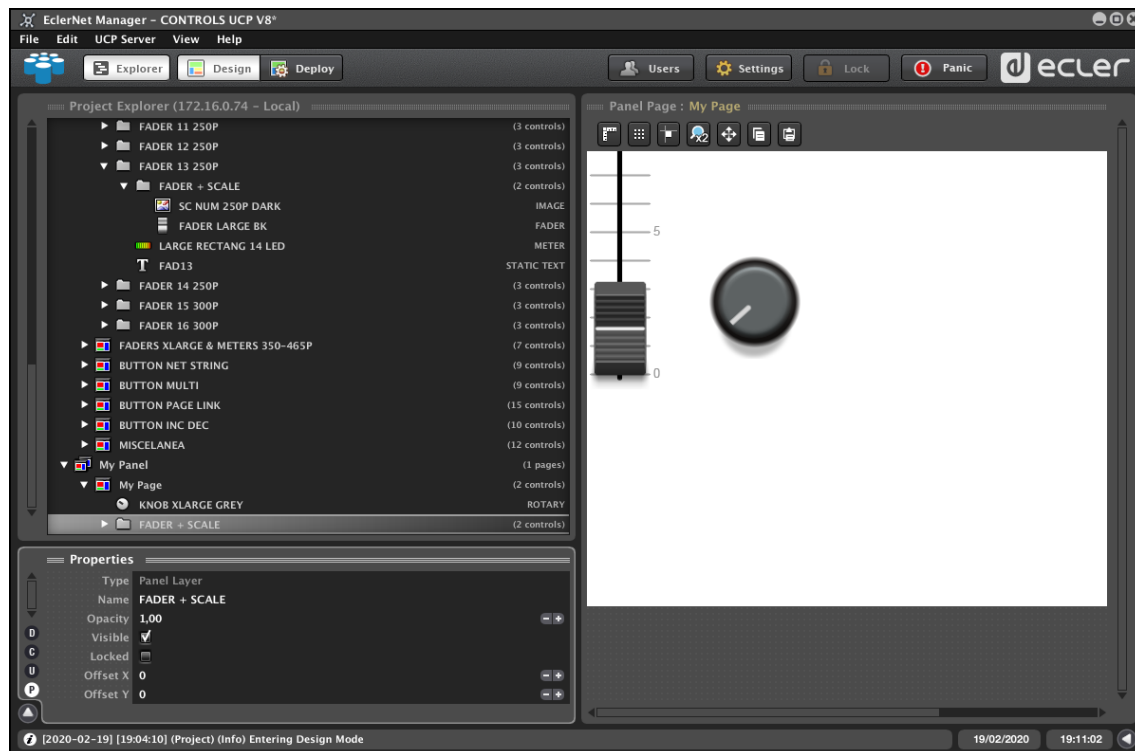


Paste it in your page:



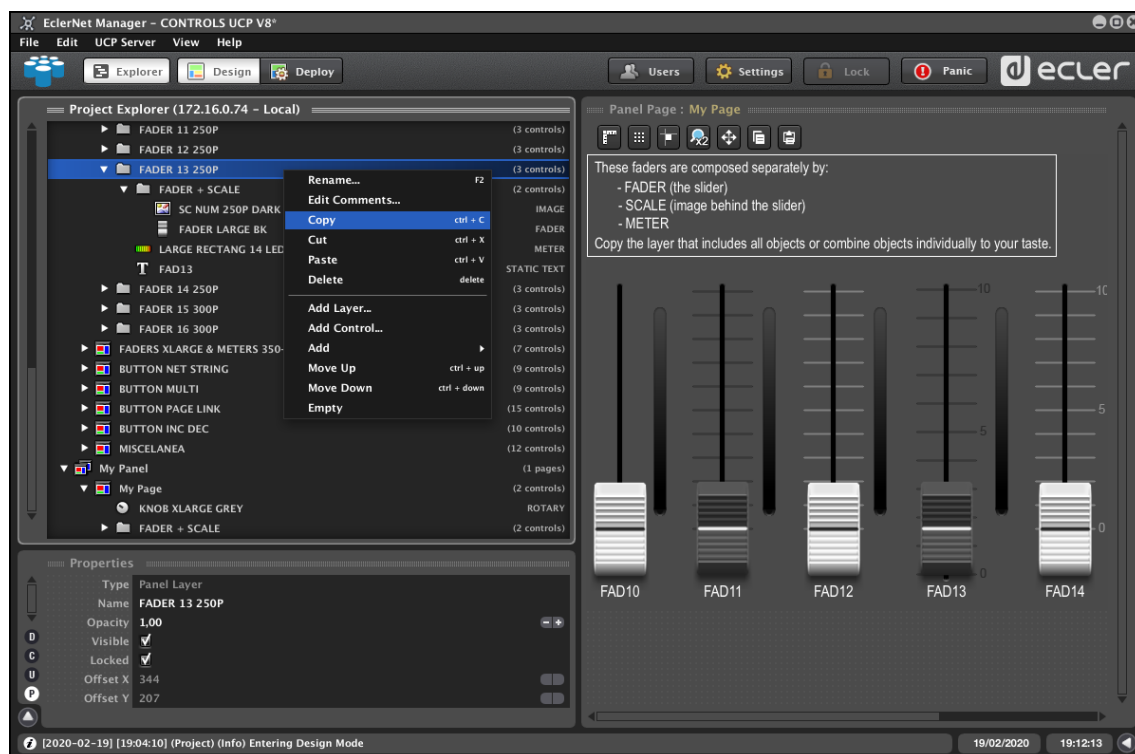
Once it is pasted to move it to a proper place you should first “Unlock” the layer (Properties Window):



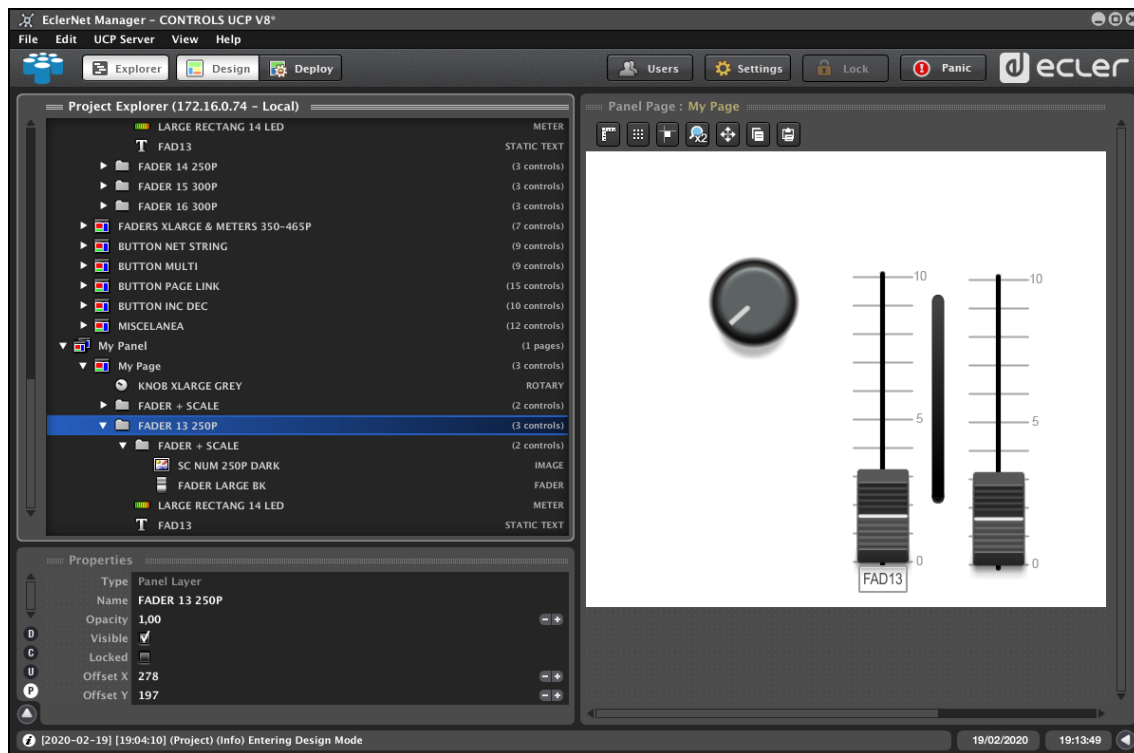


Then add Offset X and Offset Y in the Properties window to move it to a proper place.

If you want to copy also the text and the vumeter of the original design as well you should copy the previous folder in the properties window (i.e. FADER 13 250P)

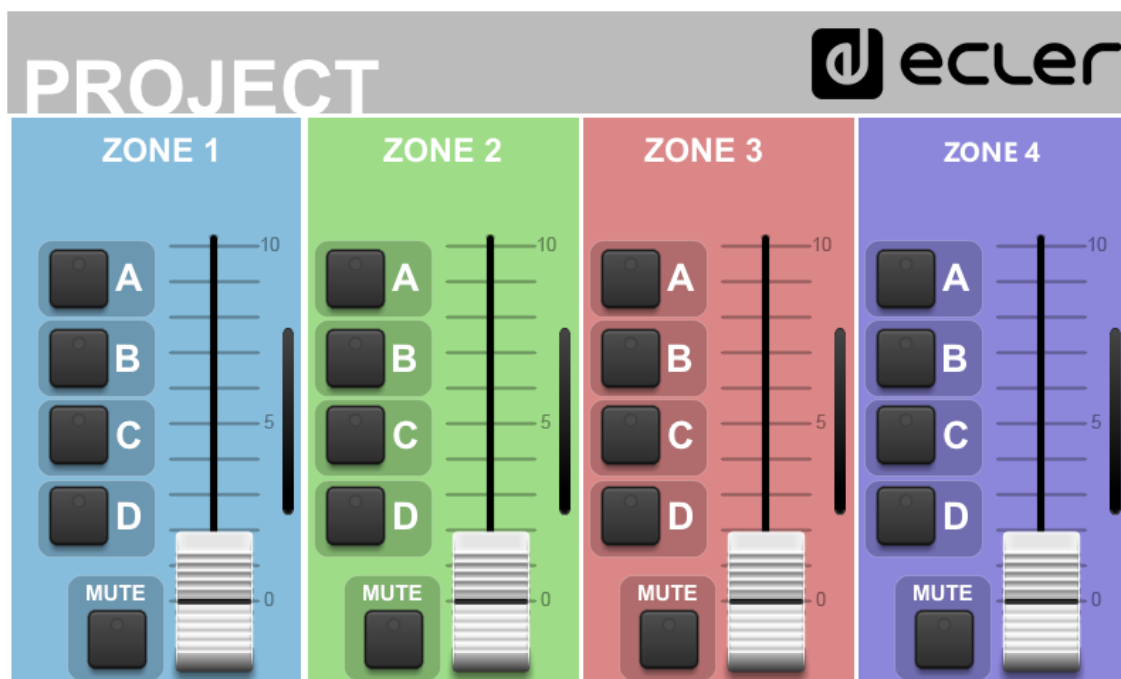
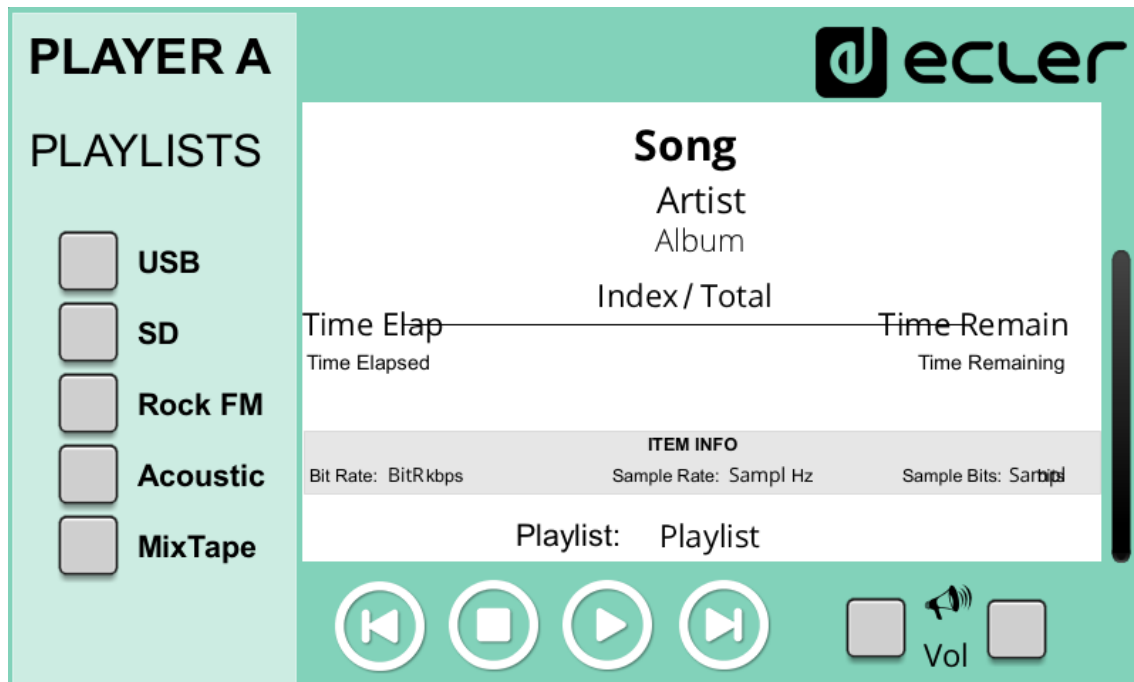


And as previously explained: paste it, unlock it and move the layer to a proper place.





When you finish copying the controls it's recommended to delete the CONTROLS LIBRARY UCP from your project to keep the file size of your project as small as possible.

#### 4. Basic Panels 800x480



PROJECT





VOLUME

Radios

1

2

3

4

ePLAY1

PC 1 WIN

PC 2 MAC

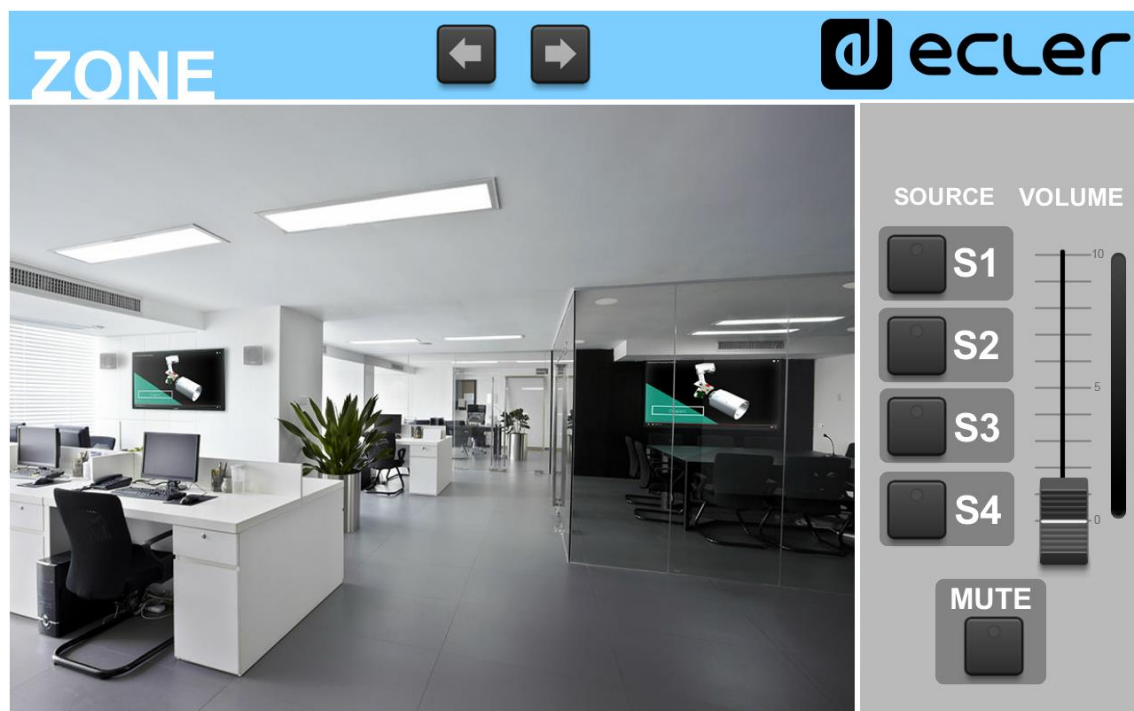
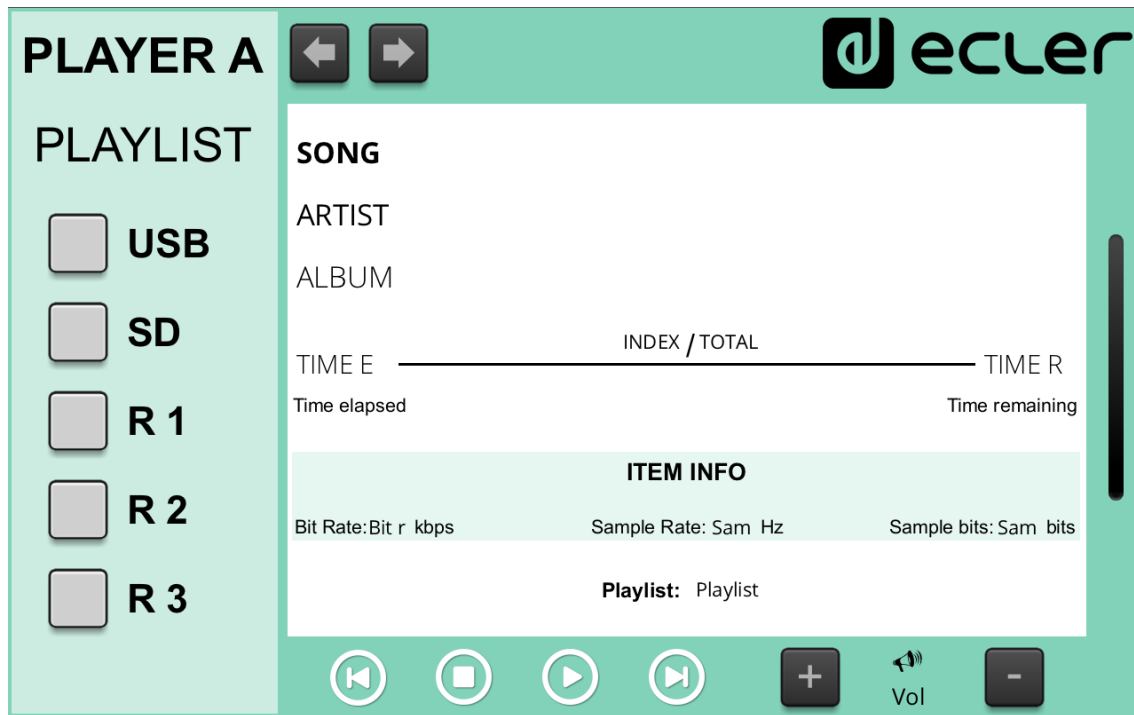
MUTE




10

5

0

## 5. Basic Panels 1280x800



**PROJ**    ecler

**ZONE 1**

S1 S2 S3 S4

MUTE

**ZONE 2**

S1 S2 S3 S4

MUTE

**ZONE 3**

S1 S2 S3 S4

MUTE

**ZONE 4**

S1 S2 S3 S4

MUTE

**PAGING STATION**

READY 

1	2	3	4	5	6	7	8	9	10
11	12	13	14	15	16	17	18	19	20
21	22	23	24	25	26	27	28	29	30
31	32	33	34	35	36	37	38	39	40

**ALL** **PAGE** **CLEAR**

All product characteristics are subject to variation due to production tolerances. **NEEC AUDIO BARCELONA S.L.** reserves the right to make changes or improvements in the design or manufacturing that may affect these product specifications.

For technical queries contact your supplier, distributor or complete the contact form on our website, in [Support / Technical requests](#).

Motors, 166-168 08038 Barcelona - Spain - (+34) 932238403 | [information@ecler.com](mailto:information@ecler.com) | [www.ecler.com](http://www.ecler.com)